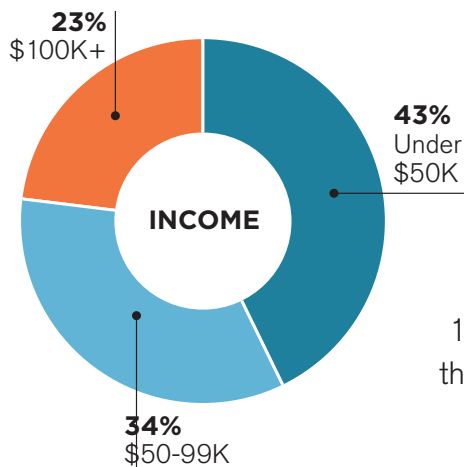


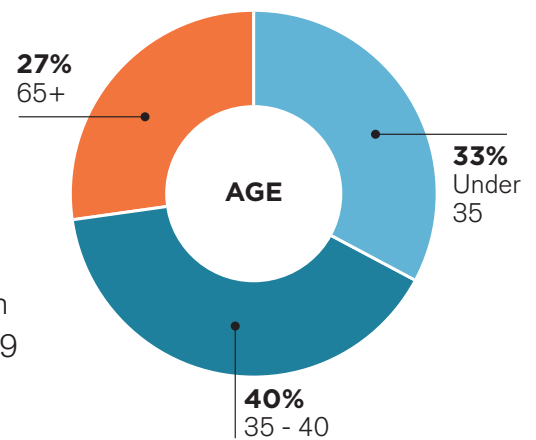
Overview

The Spokane Regional Transportation Council (SRTC) conducted a study of Spokane County residents' day-to-day travel from February - April 2022. Study respondents were randomly selected from all residents in the county and were invited using mailed invitations. Participants had the option to participate using an online, phone, or smartphone app survey. This type of study was last conducted in 2005.

Who Participated in the Study?



1,953 households participated in the study, yielding data from 3,879 persons and 34,627 trips. The pie charts here further describe the study results.



How Has Our Region Changed Since 2005?

Our **households** still have an average of

**2.43
PEOPLE**



Adults made slightly less trips per day

2005

**4.43
TRIPS**

2022

**4.40
TRIPS**

We have new ways of getting around, like ride-hailing services.

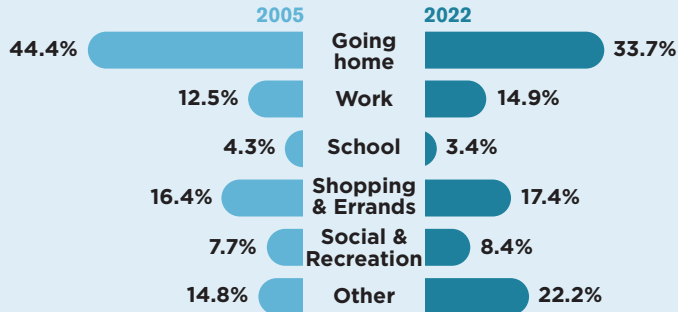


75% of those who use ride-hailing services are between **age**

25-54

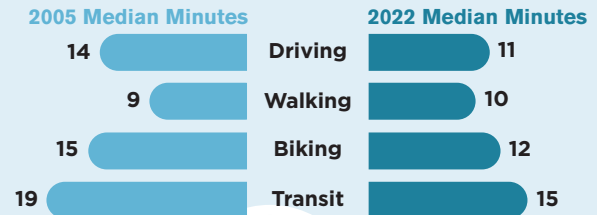
Why Do We Travel?

TRIP PURPOSE



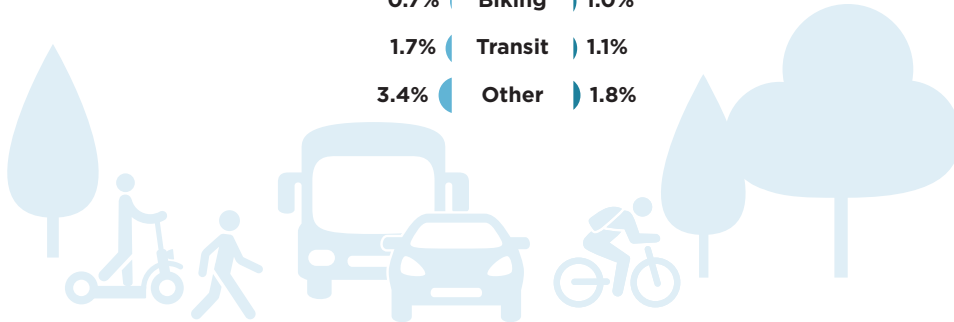
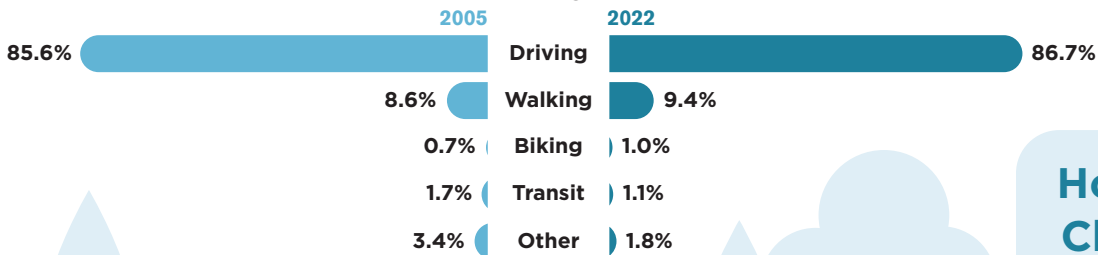
How Long Do Trips Take Us?

TRIP MODE



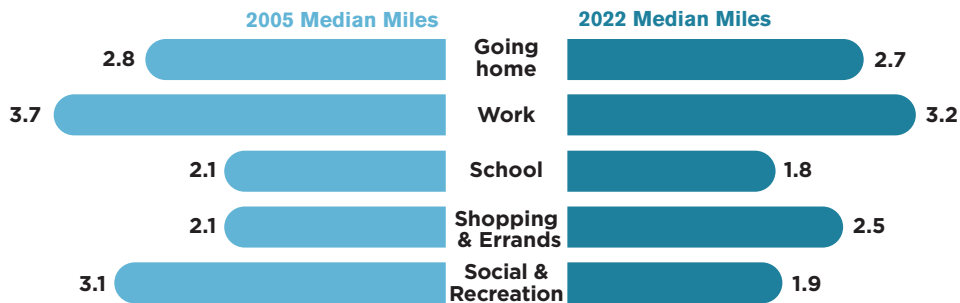
How Do We Get There?

TRIP MODE



How Far Do We Travel?

TRIP PURPOSE



How Has Travel Changed Since COVID-19?

Before March 2020, **28%** of workers teleworked at least once per week.



In spring 2022, **34%** of workers were teleworking at least once per week.