

BOARD OF DIRECTORS

VOTING MEMBERS

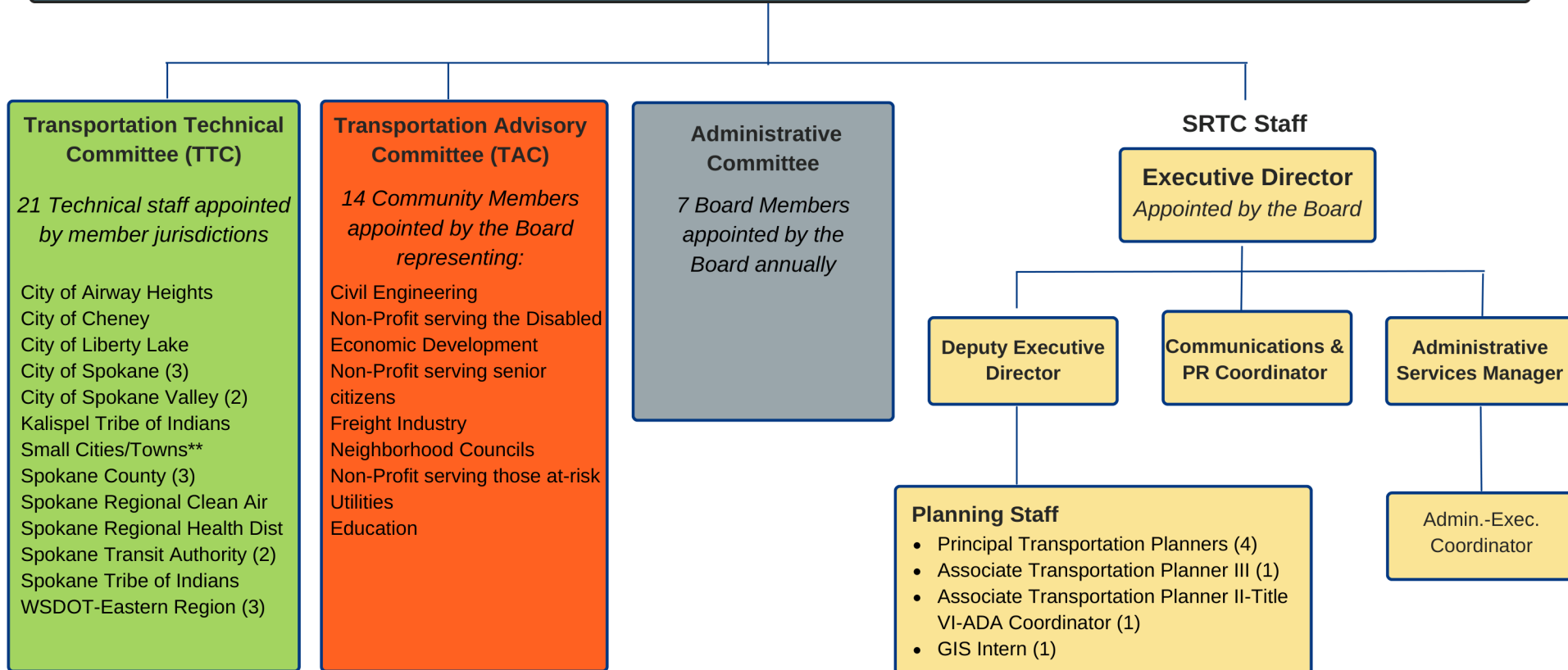
City of Airway Heights
City of Cheney
City of Deer Park
City of Medical Lake
City of Millwood
City of Spokane (2)
City of Spokane Valley (2)
Kalispel Tribe of Indians
Major Employer Representative
Rail/Freight Representative

Small Towns Representative*

Spokane County (2)
Spokane Transit Authority
Spokane Tribe of Indians
WSDOT Eastern Region
WA State Transportation Commission

EX-OFFICIO MEMBERS

TTC Chair
TAC Chair
Regional WA State Legislators



*Towns of Fairfield, Latah, Rockford, Spangle & Waverly

**Towns listed above plus Cities of Deer Park, Medical Lake & Millwood