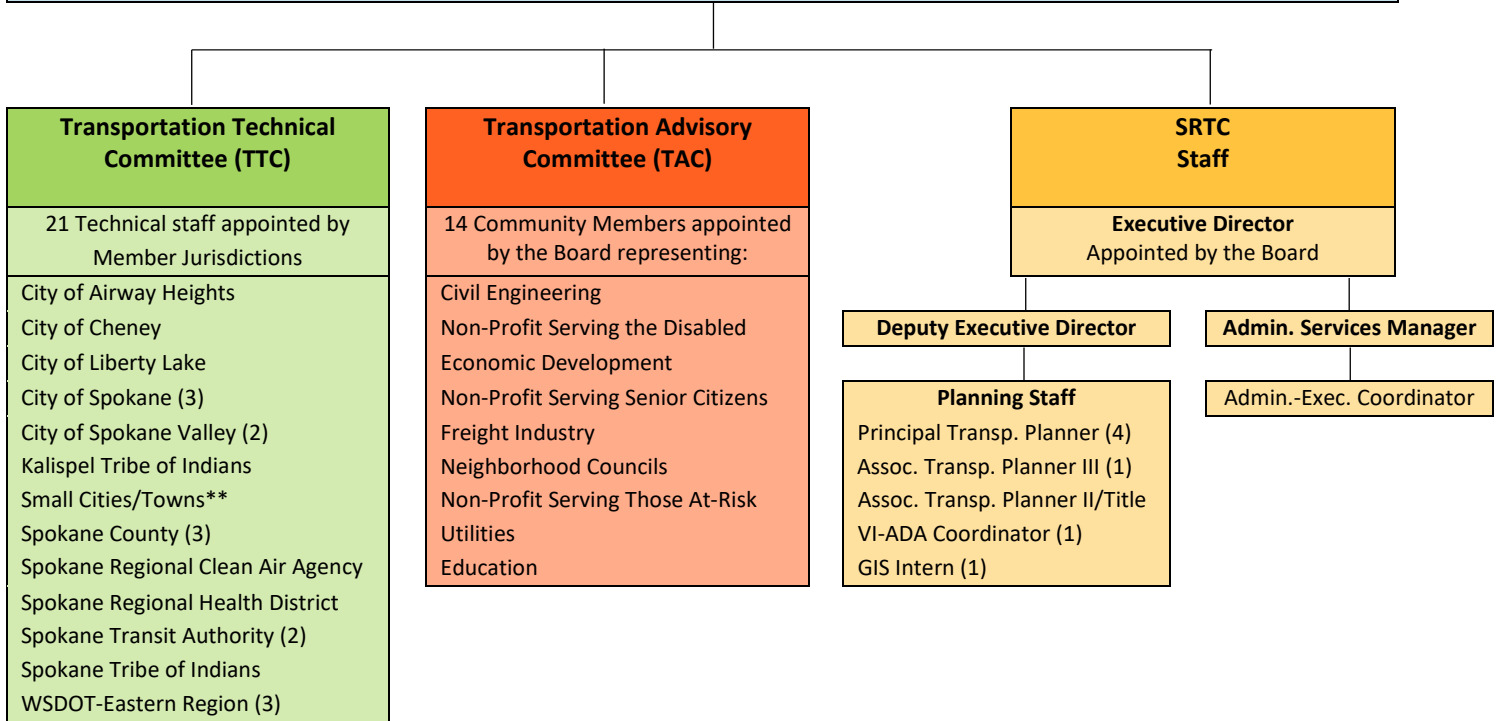




421 W RIVERSIDE AVE, SUITE 500 - SPOKANE, WA 99201 - 509.343.6370 - WWW.SRTC.ORG

## 2023 ORGANIZATIONAL CHART

BOARD OF DIRECTORS		
<b><u>VOTING MEMBERS</u></b>		
City of Airway Heights	City of Spokane (2)	Spokane County (2)
City of Cheney	City of Spokane Valley (2)	Small Towns Representative*
City of Deer Park	Kalispel Tribe of Indians	Spokane Transit Authority
City of Medical Lake	Major Employer Representative	Spokane Tribe of Indians
City of Millwood	Rail/Freight Representative	WSDOT Eastern Region
		WA State Transportation Commission
<b><u>EX-OFFICIO MEMBERS</u></b>		
TTC Chair, TAC Chair, Regional WA State Legislators		



\*Town of Fairfield, Latah, Rockford, Spangle & Waverly

\*\* Towns listed above plus cities of Deer Park, Medical Lake & Millwood