

Regionally Important Networks

A subtask of the MTP Update

March 25, 2020

Shauna Harshman, Associate Transportation Planner III

TTC

Page 10

What we are working on

- Developing maps and graphics to increase program & project funding
- Creating tools to assist decision making
- Building tools for consistency check between local and regional plans

Where we are headed

A planning process that:

- increases proactive planning;
- improves transparency;
- shifts focus from individual projects to the regional system;
- provides a clear framework for the definition of projects; and
- is inclusive of all users.

DRAFT



DRAFT

SRTC MTP CONSISTENCY CHECKLIST

DRAFT

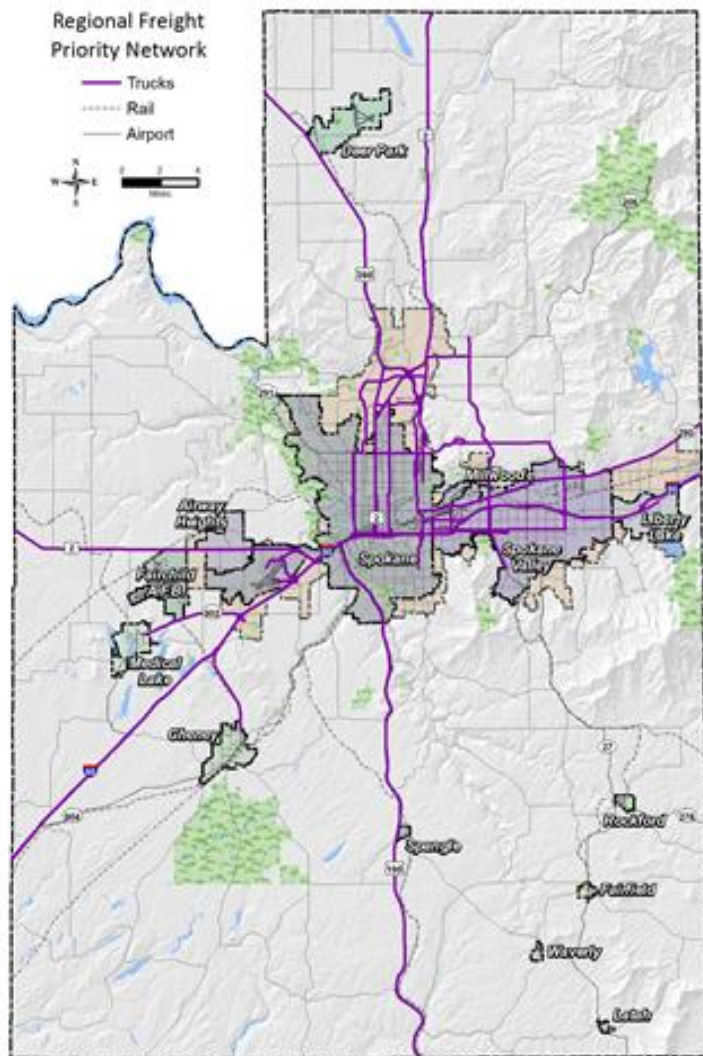
REGIONALLY
IMPORTANT
NETWORKS IN
MTP

- Consistent with guiding principles
- Regionally Significant
- Regionally Important
- Performance Area Named Project
- Performance Area Aligned Project

DRAFT

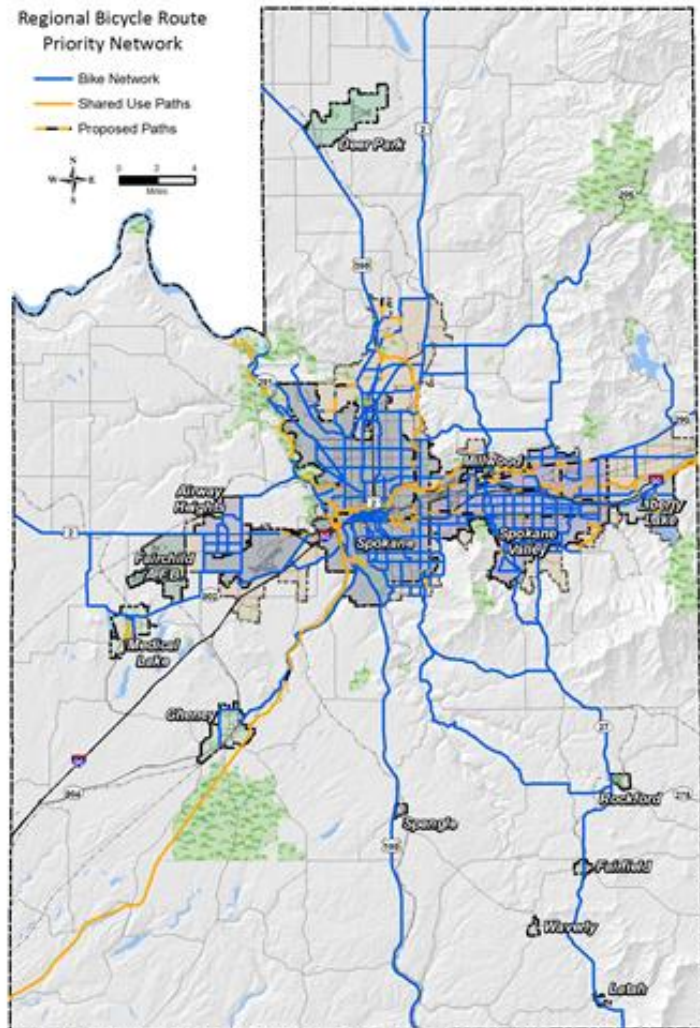
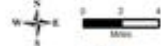
Regional Freight Priority Network

- Trucks
- Rail
- Airport

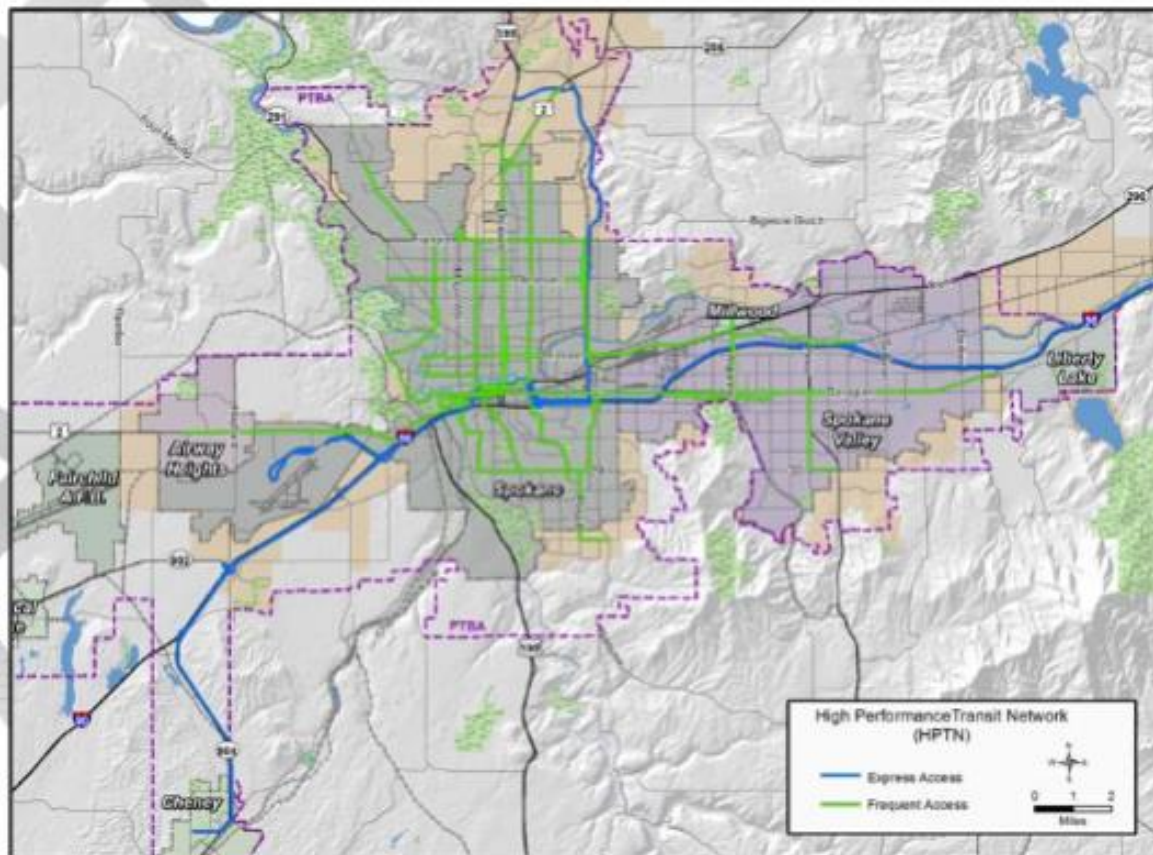


Regional Bicycle Route Priority Network

- Bike Network
- Shared Use Paths
- Proposed Paths



Map 4.4 Transit Priority (HPTN) Network



Next Steps

- Discuss network approach and graphics with TTC
- Complete map updates of regionally important networks