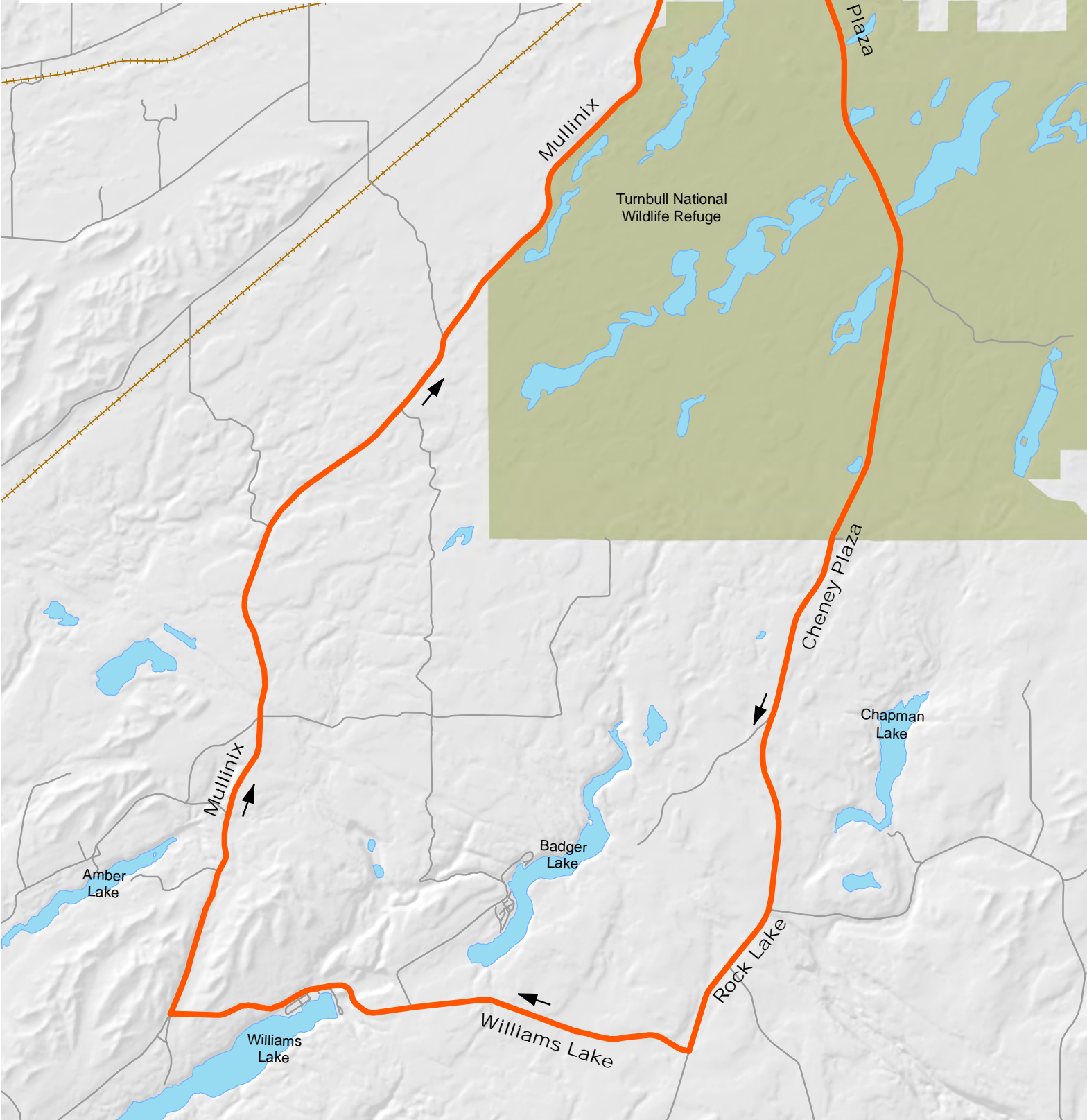
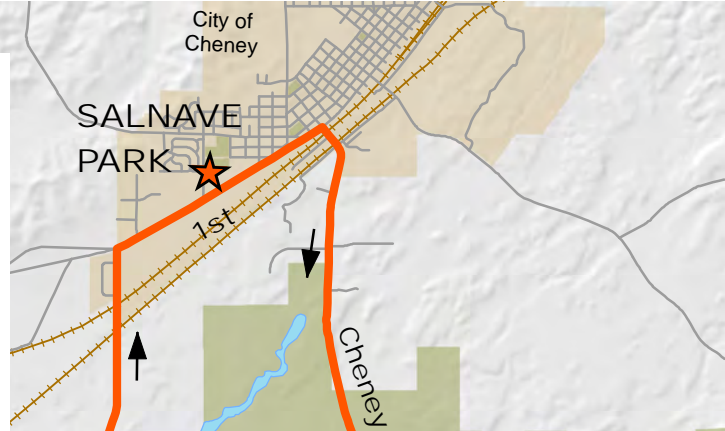


WILLIAMS LAKE RECREATIONAL RIDE

Gently rolling with one or two steep hills
25 miles



0 0.5 1 2 3 4 Miles



WILLIAMS LAKE

25 miles (40 km)

Gently rolling with one or two steep hills

Begins at Salnave Park
(Cheney)

- Ride out of Cheney and ride south on Cheney-Plaza Rd.
- As Cheney-Plaza Rd turns east, go south on Rock Lake Rd.
- Turn right on Williams Lake Rd to ride west between Badger Lake and Williams Lake.
- Return north by turning right on Mullinix Rd.
- Turn right on SR 904 for a short distance back to Cheney and the beginning.