

April 2011

SRTC

Spokane Regional Transportation Council

"SRTC provides for the safe and efficient movement of people and goods into, within, and through the Spokane Region with an integration of balanced multi-modal transportation choices."

Avoid Road Construction Delays



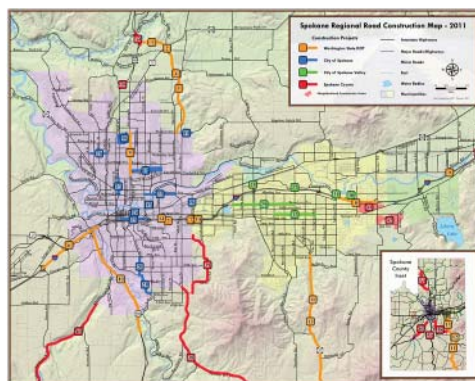
A large number of road construction projects are planned for the Spokane region this year. Local government

jurisdictions were able to schedule additional projects in 2011 because, due to the slow economy, contractor prices are low. These construction projects will employ local people.

These projects mean more potential traffic impacts for you, but there are resources to help avoid delays and backups caused by road construction. SRTC, Spokane County, the Cities of Spokane and Spokane Valley, the Washington State Department of Transportation, Spokane Transit, Downtown Spokane Partnership, and the Spokane County Commute Trip Reduction program coordinated in order to develop the **2011 Spokane Regional Road Construction Map** and the www.SpokaneRoadFix.net website.

The website has all the resources in one place in order to help you avoid construction delays, including links to up-to-the-minute traffic information and live traffic cameras, suggested alternate routes to get around construction zones, ways to win prizes for using alternative transportation, information on area bike routes, and help for owners and managers of businesses within construction zones.

The site also has information on where you can pick up a free copy of the **Spokane Regional Road Construction Map**. Information on the map includes the type of projects, project locations, and start and completion dates.



SpokaneRoadFix.net will be updated as new construction projects start and others end, or detour routes change, so check back often.

WP-SIA Transportation Study Report Available for Review and Comment

A draft of the West Plains-Spokane International Airport (WP-SIA) Transportation Study report, developed by SRTC, is available for review and public comment.

The WP-SIA Study was initiated to address the long-term transportation needs of the West Plains area and facilitate coordination and cooperation at the local, regional, and statewide levels. Input received from the public during the study process raised concerns regarding safety and the need for multi-modal transportation options within the West Plains area.

In addition to bike/pedestrian recommendations, the WP-SIA Study report contains a list of roadway alternatives and safety recommendations for the study area. To view the WP-SIA Study report, go to www.SRTC.org. There is a link on the home page. All comments must be submitted by April 27, 2011.

Check out www.srtc.org for all SRTC's latest projects

Transportation Vision Project Public Comment Period



Draft reports for the Transportation Vision Project are now available for review and public comment. The Spokane Unified Regional Transportation Vision and Implementation Strategy and the Vision Process Summary Report can be found online at www.spokanetransportationvision.com.

The Transportation Vision Project has been a year-long effort to develop a long-term vision and implementation plan for transportation across the Spokane region. The process looked at existing plans and policies regarding transportation; community values; patterns of physical, economic, and social development for the region; and the needs of the community.

It utilized a series of outreach efforts including public meetings, an online game, and a telephone survey to gather input from the community about their vision for the future of local transportation.

The Vision and Implementation Strategy includes a series of recommendations and suggestions to meet the identified vision. Draft recommendations include further integrating transportation and land use planning, focusing investments to position the region for economic growth, and working together as a region to make the identified vision a reality. The Vision Process Summary Report provides detail about the public outreach efforts.

A public comment period for the two documents runs until May 8, 2011.

INLAND PACIFIC HUB

A global reach for commerce

Inland Pacific Hub Update

Phase 2 of the Inland Pacific Hub (IPH) project is moving ahead at full speed. IPH is a project to establish the Inland Pacific Region as a multi-modal global gateway to increase domestic and international commerce. It's a partnership established by and comprised of public and private sector representatives from Idaho and Washington.

Phase 2 of the project is aimed at identifying and recommending actions, strategies and programs that can be implemented to strengthen the competitive position of the IPH region, domestically and globally. Consulting firm HDR, Inc. has been hired to manage this phase of the project and is working on the development of a public and stakeholder outreach plan, identifying data needs, and planning for a stakeholder workshop.

Public meetings will be held as part of Phase 2, so check the project website at www.inlandpacifichub.org periodically for updated information.

Transportation Advisory Committee Seeking New Members

SRTC's Transportation Advisory Committee (TAC) will be seeking new members in April or May. The Committee is responsible for advising the Board on recommendations regarding plans, programs, and activities conducted by SRTC. The TAC differs from other SRTC committees in that it is made up of citizens instead of technical staff or elected officials.

The TAC provides an opportunity for the public to be involved in SRTC's activities. It is composed of 13 members, spanning an array of geographic areas, modal and policy expertise, agencies, and constituent groups. Due to expiring TAC member terms, there will be several seats on the Committee open.

TAC openings are expected to be posted at www.SRTC.org in May. Please check back for application materials and further information regarding the TAC.

Census Data Available

If you're interested in results from the 2010 Census, SRTC has Census data posted on our website regarding population, race, age, and housing units for both Spokane County and Census Places (a concentration of population having a name, being locally recognized, and not part of any other place) within Spokane County.

That data can be viewed at www.SRTC.org. There is a link on the home page.

Joint SRTC/KMPO Board Meeting

SRTC and Kootenai Metropolitan Planning Organization (KMPO), the Metropolitan Planning Organization for Kootenai County, held a special joint Board Meeting in March to discuss how the result from the 2010 Census could potentially impact the two agencies.

The KMPO Board contracts with SRTC to provide day-to-day operational, administrative and planning services, and some board members were concerned the results of the 2010 Census could impact that relationship and future funding.

Representatives from the Federal Highways Administration and the U.S. Census Bureau attended the meeting to discuss the potential issues. They said that 2010 Census results show there has been increased population in both Spokane and Kootenai counties. In the eyes of FHWA, they said the two urban areas of Spokane and Coeur d'Alene are likely to be classified as one for the purpose of defining a single traffic management area. That could determine how much federal funding is allocated to each metro area, but the two organizations would not be required to merge into one. Still, there are many variables that could affect the funding in the months ahead and nothing is expected to be determined until the end of this year at the earliest. Regardless of the traffic management area designation, the U.S. Census Bureau is likely to continue looking at our region as two separate metro areas with a high level of interaction between the two.

About 70 representatives from area government agencies, both in Washington and Idaho, attended the meeting.

SRTC Travel Demand Model Update

SRTC is working to update its Travel Demand Model with additional modes of transportation. The Travel Demand Model is a complex computer program that estimates travel patterns within the region. It currently only considers private and commercial vehicles.

A request for proposals for consulting firms to manage this project was released earlier this year. The SRTC Board is expected to approve one of the firms that responded at the April meeting. After a final contract is negotiated, modeling work is expected to start in early May.

The first phase of this project will involve integrating public transit elements into the model. Later phases of this project will include implementing rail and other high capacity modes of travel.

Check Out the

SRTC
Transportation Blog

One way to keep up with what SRTC is up to is to check our blog at <http://srtctransportation.blogspot.com/>. The blog is generally updated daily to keep you up-to-date on what is happening in transportation, locally, and nationally.

Recent discussions on the blog include potential new sources to fund our transportation system in the future, the design options for the City of Spokane's proposed pedestrian bike bridge and how much coffee SRTC staffers can drink.

If you have any issues you would like to see addressed on the blog or applicable articles, please email them to contact.srtc@srtc.org.



May is National Bike Month, and there are a lot of events planned locally throughout the month and particularly for Bike to Work (& Everything Else!) Week, Sunday May 15 through Saturday May 21, 2011.

For information on what's planned, and how to get involved, visit the new www.SpokaneBikes.org website (formerly Bike to Work Spokane).